



jordan fishwick

14 Chamberlain Drive, SK9 2SN
Guide Price £185,000

Chamberlain Drive Wilmslow

Guide Price £185,000



NO CHAIN. Situated within a highly popular development, this two double bedroom ground floor apartment is located a short drive away from Wilmslow town centre on Chamberlain Drive. Wilmslow itself offers a wide range of shopping facilities, bars, restaurants, leisure centre and Wilmslow station which allows easy direct access to London Euston and Manchester City centre. The accommodation in brief comprises: communal entrance hallway, private entrance hallway, well presented living room with fitted display cabinets, contemporary breakfast kitchen, two double bedrooms and a three piece white bathroom suite. The apartment also benefits from allocated parking. Internal viewings are a must in order to fully appreciate.



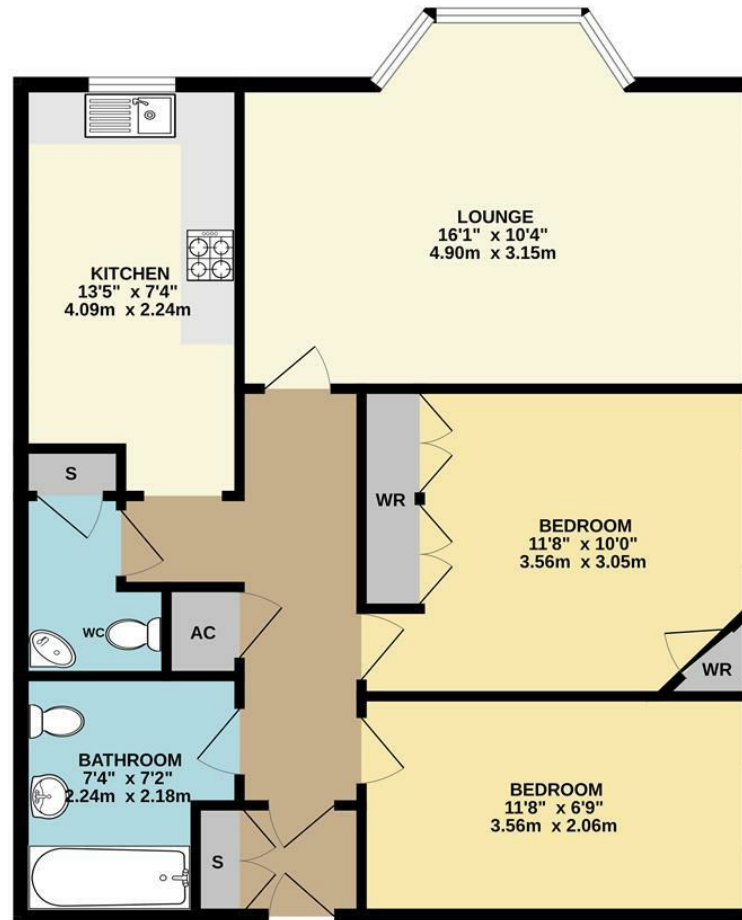


- Ground Floor Apartment
- Two Double Bedrooms
- Close To Amenities
- Contemporary Breakfast Kitchen
- Allocated Parking
- Internal Viewings a Must



Energy Efficiency Rating		
	Current	Potential
Very energy efficient - lower running costs		
(92 plus) A		
(81-91) B		
(69-80) C	80	80
(55-68) D		
(39-54) E		
(21-38) F		
(1-20) G		
Not energy efficient - higher running costs		
England & Wales	EU Directive 2002/91/EC	

GROUND FLOOR



Measurements are approximate. Not to scale. Illustrative purposes only
Made with Metropix ©2025



These particulars are believed to be accurate but they are not guaranteed and do not form a contract. Neither Jordan Fishwick nor the vendor or lessor accept any responsibility in respect of these particulars, which are not intended to be statements or representations of fact and any intending purchaser or lessee must satisfy himself by inspection or otherwise as to the correctness of each of the statements contained in these particulars. Any floorplans on this brochure are for illustrative purposes only and are not necessarily to scale.

Offices at: Chorlton, Didsbury, Disley, Hale, Glossop, Macclesfield, Manchester Deansgate, Manchester Whitworth Street, New Mills, Sale, Wilmslow and Withington

36-38 Alderley Road, Wilmslow SK91JX
01625 532000

wilmslow@jordanfishwick.co.uk
www.jordanfishwick.co.uk